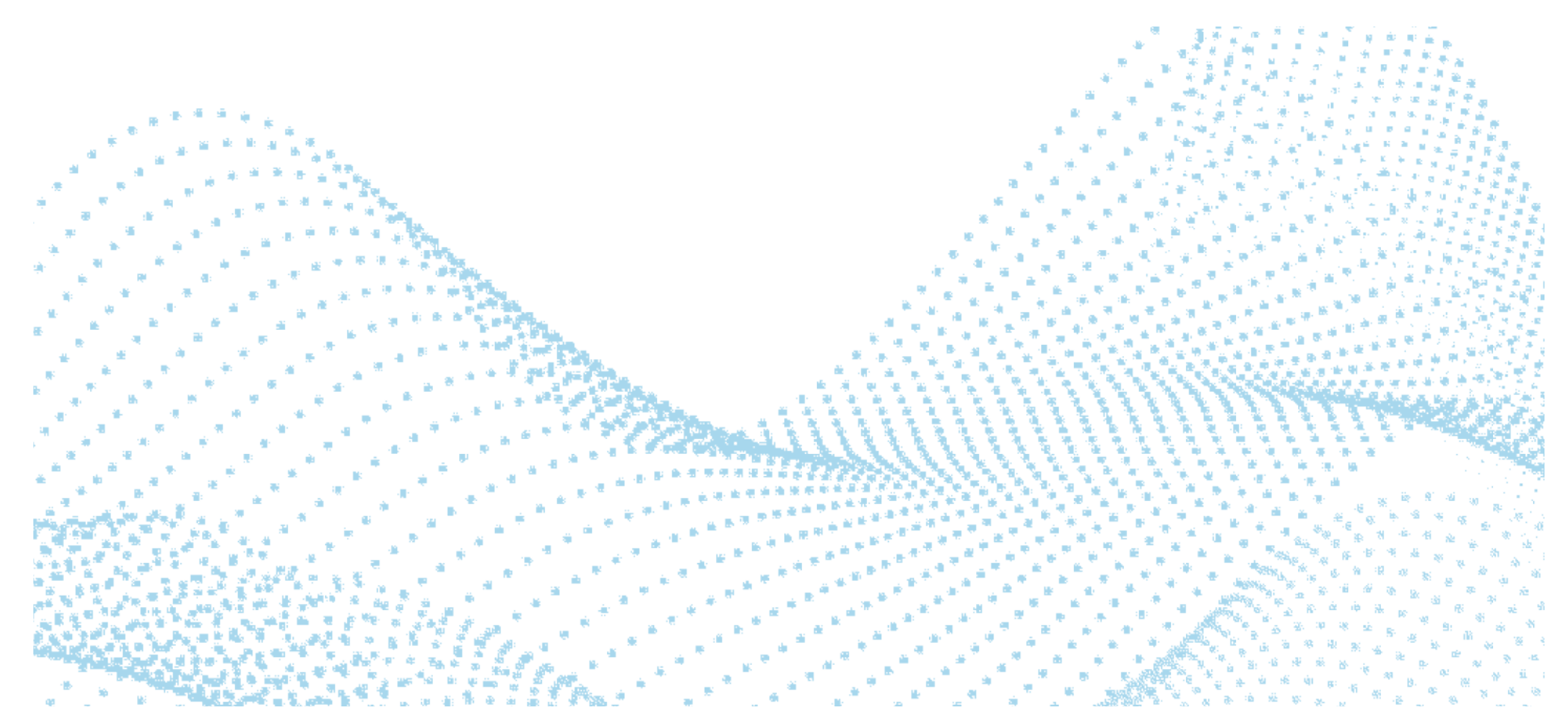




Linguistic Research Infrastructure - LiRI

The present state of the future

Swiss CLARIN-B center



LiRI is a Technology Platform to serve the needs of quantitative linguistic research at UZH, Switzerland and beyond.

LiRI is closely related to

- Center for Linguistics UZH (LIZZ)
- URPP Language and Space UZH
- NCCR Evolving Language
- NCCR@LiRI**
- Machine Learning, Statistics, Data Aggregation, and Data Sciences particularly targeted at the needs for the NCCR Evolving Language

LiRI collaborates with



SWISSbase & UB Data Services

SWISSbase is a national cross-disciplinary solution for Swiss universities to ensure that research data are preserved and accessible in the long-term.

Contact

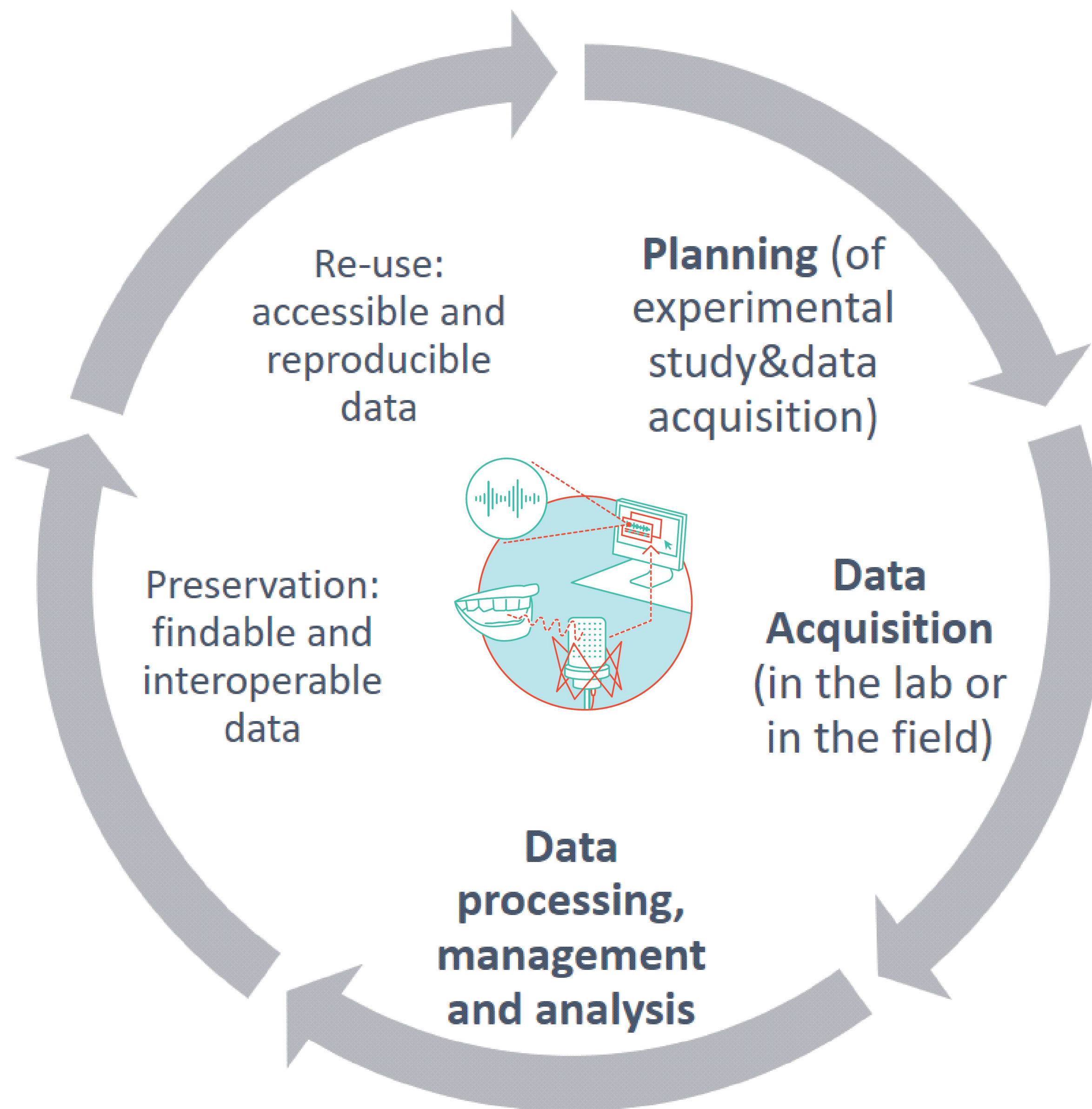
Dr Agnes Kolmer
Manager of LiRI platform
Mail: agnes.kolmer@uzh.ch
Web: www.liri.uzh.ch

Linguistic Disciplines addressed

- Phonetics
- Neurolinguistics
- Corpus Linguistics
- Psycholinguistics
- Descriptive Linguistics
- Interaction Studies
- Digital Linguistics

Evolving new methods in all disciplines of Language Sciences

- Collaborative Research
- Deal with Big Data
- Engage with Open Access and Open Science
- Enable Data Reproducibility



LanguageTechnology@LiRI

- Data management, data modeling, databases
- Data processing, NLP
- Computational Linguistics
- Corpus Linguistics, Lexicography
- Scientific programming, software engineering, user interface design

Swissdox@LiRI

Start Projects

Directors@LiRI

- Prof. Dr. Volker Dellwo
- Prof. Dr. Noah Bubenhofer
- Prof. Dr. Martin Meyer
- Prof. Dr. Guido Seiler, President LiZZ (advisory role)

LiRI is part of the

Swiss Roadmap for Research Infrastructures in view of the 2021-2024 ERI Dispatch (SERI)

LiRI provides services

For researchers (fee-based) and for students (if capacities allow, free for students of Canton of Zurich)

LanguageStats & Machine Learning @LiRI

Statistical consultation for linguistic projects
Machine Learning expertise in collaboration with Research Projects

DataAcquisition@LiRI

Practicalities of fieldwork - choice of appropriate recording equipment, methodologies, transcription, corpus building of naturalistic data, metadata, project workflow, data archiving



Lab@LiRI

- Speech lab facilities: Articulation, Acoustics, Perception
- Brain lab facilities: EEG, fNIRS
- Static and loan equipment

Location: Campus Oerlikon
Andreasstrasse 15, 8050 Zürich

Online@LiRI

Online experimenting for perceptual and corpus data



Welcome to Swissdox@LiRI